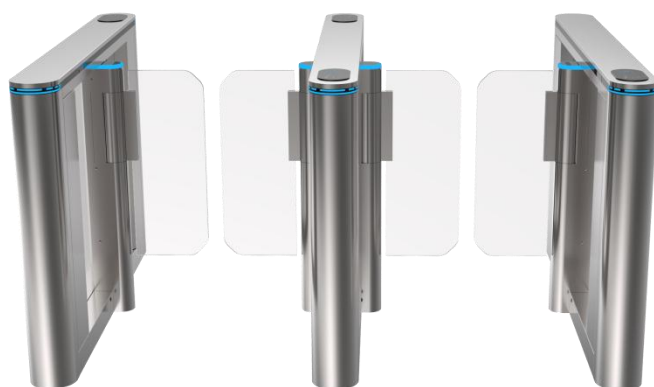


Product model: B302C



## B302C Product Show



two-channel



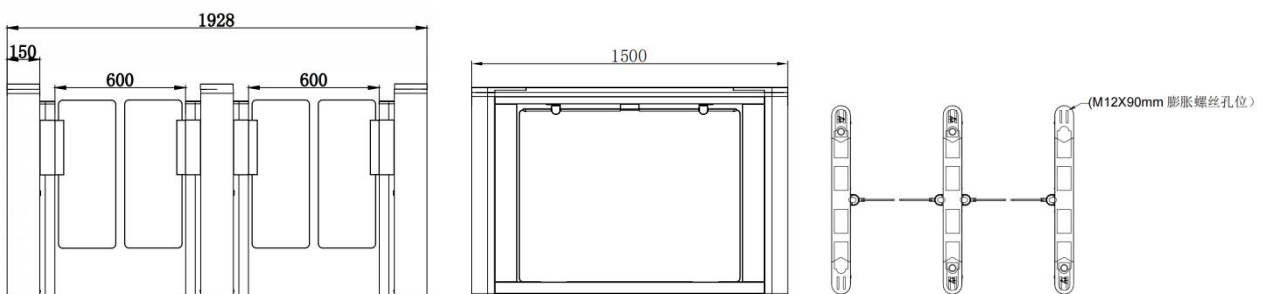
Single channel

FOR A SAFER WORLD.

## Functions & Features

- 1、 Reasonable and reliable design, low noise, smooth operation and long service life;
- 2、 With functions of anti-tail, anti-reverse pass and so on;
- 3、 Card can be set "with memory" or "without memory" functions;
- 4、 With automatic reset function, i.e. after having access to the gate, the gate automatically restores to the locked state if not pass within the time set;
- 5、 With infrared anti-clip function (anti-clip when gate is open or running);
- 6、 Compatible with IC, ID card, scanning and face recognition,etc.
- 7、 Two modes of operation are available: open or closed.
- 8、 Various working modes are available, including two-way card reading and one-way card reading,etc.

## Product Size



## Parameter

Size (L*W*H)	1500*150*980mm
Pass width	600-900mm
Power	120W
Material	δ=1.5mm SUS304
Bar Material	10mm Clean Acrylic
Movement	Servo speed gate movement
Infrared sensor	12 pairs
Clutch	∅ =80mm
Indicator Light	RGB light
Drive Unit	Brushless servo Motor 100W
Power Supply	24V 500W
Control Unit	Servo control system
Communication Interface	Dry contact/ RS485
Pass rate	35-50 persons/minute
Temperature	-20°C~+70°C
Humidity	≤90% No condensation
IP	IP4X
Environment	Indoor and outdoor (outdoor with canopy)

Product model: B302C

## Case share



FOR A SAFER WORLD.